

NOTES:

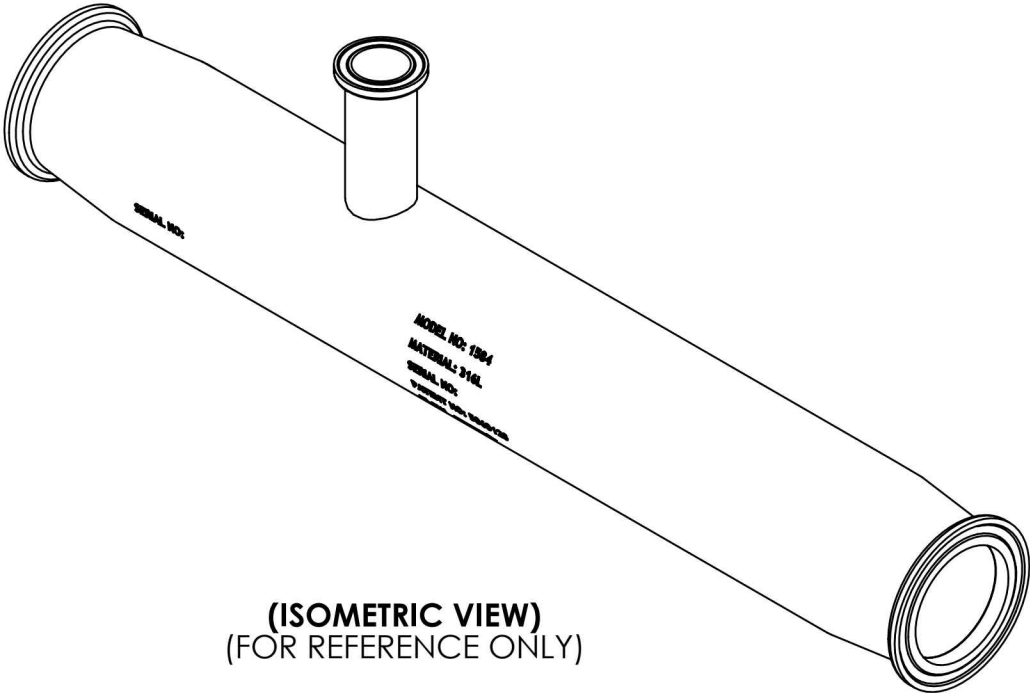
1. MATERIAL OF CONSTRUCTION: TYPE 316L, STAINLESS STEEL
2. MTR/HEAT NUMBERS ARE PROVIDED AND SHALL MEET APPLICABLE MATERIAL SPECIFICATIONS.
3. INLET/OUTLET CONNECTION:

1.50" NOMINAL DIA., ASME BPE-2008, SANITARY TRI-CLAMP FITTING
4. SUCTION PORT CONNECTION:


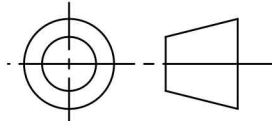
.75" DIA., ASME BPE-2008, SANITARY TRI-CLAMP FITTING
5. WELDING JOINTS TO BE COMPLETE JOINT PENETRATION, WHERE POSSIBLE.
6. HYDROTESTING MAY BE PERFORMED IN ACCORDANCE WITH MAZZEI SOP NO. 6090.
7. DYE PENETRANT TESTING MAY BE PERFORMED IN ACCORDANCE WITH MAZZEI SOP NO. 6095.
8. CLEANED FOR PASSIVATION PER ASTM A380 GUIDELINES.
9. PASSIVATED PER ASTM A967 SPECIFICATION.
10. FINISH:

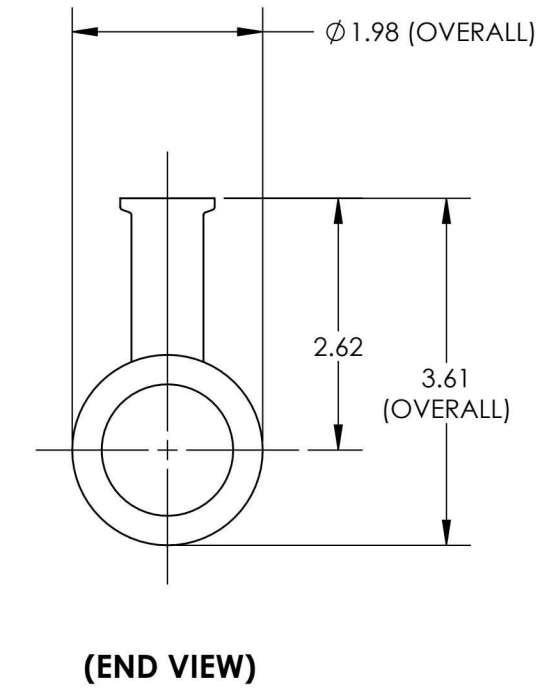
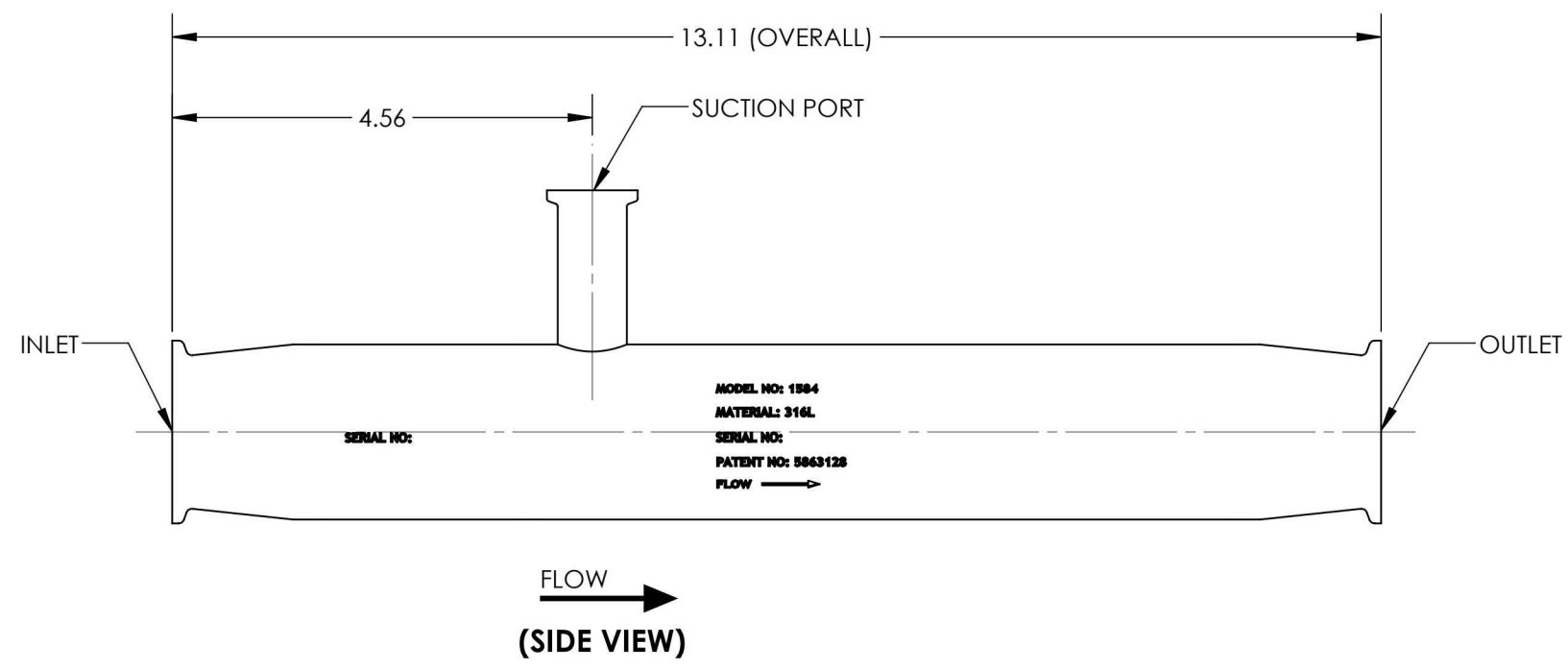
INTERNALS: MACHINED FINISH
EXTERNALS: MACHINED FINISH
11. WELD MAP, NON DESTRUCTIVE TESTING (NDT), CLEANING AND INSPECTION REPORTS TO BE PROVIDED BY MAZZEI.


REVISIONS			
REV.	DESCRIPTION	DATE	APPROVED
NC	RELEASED FOR SUBMITTAL.	4/8/2014	J. BENNETT
A	UPDATED NOTES & SHEET FORMAT.	4/8/2015	J. BENNETT



SUBMITTAL DRAWING

SUBMITTAL NOTICE		CONFIDENTIALITY NOTICE		UNLESS OTHERWISE SPECIFIED		APPROVALS		DATE		<div> DESCRIPTION:</div>		MAZZEI INJECTOR CO., LLC							
ANY RECOMMENDATIONS FOR PRODUCT AND/OR SYSTEM DESIGN, WHETHER CONTAINED IN A DOCUMENT, WITHIN THIS DRAWING, COMMUNICATED BY ELECTRONIC MEANS OR GIVEN VERBALLY, ARE INTENDED SOLELY AS GUIDELINES TO ACTUAL SYSTEM DESIGN. SAID RECOMMENDATIONS ARE BASED UPON INFORMATION SUPPLIED BY OTHERS, THE ACCURACY OF WHICH IS BEYOND VERIFICATION BY MAZZEI INJECTOR CO. LLC. THEREFORE MAZZEI CANNOT AND DOES NOT WARRANT THE SUITABILITY OF ITS PRODUCTS FOR A PARTICULAR SERVICE NOR THE PERFORMANCE OF ANY SYSTEM CONTAINING COMPONENTS MADE OR SOLD BY MAZZEI.		THE INFORMATION CONTAINED IN THIS DRAWING IS THE SOLE PROPERTY OF MAZZEI INJECTOR COMPANY LLC. ANY REPRODUCTION IN PART OR AS A WHOLE WITHOUT THE WRITTEN PERMISSION OF MAZZEI IS STRICTLY PROHIBITED.		DIM ARE IN INCHES		DRAWN:		T. JOHNS		4/7/2014		500 ROOSTER DRIVE BAKERSFIELD, CA 93307 PHONE: (661) 363-6500 FAX: (661)363-7500 WWW.MAZZEI.NET							
				TOL ON ANGLE ± .50°		CHECKED:		K. COBAR		4/8/2014									
				2 PL ± .06 3 PL ± .030		APPROVED:		J. BENNETT		4/8/2014									
		DRAWING MAY NOT BE PRINTED FULL SIZE DO NOT SCALE				INTERPRET DIM AND TOL PER ASME Y14.5M-1994		QA:		-				INJECTOR; SSF01584ABB00					
THIRD ANGLE PROJECTION						CUSTOMER APPROVAL:		-											
						CUSTOMER:		-		N/A									
												SIZE:		JOB NO.:		DRAWING NUMBER:		REV:	
												B		N/A		SSF01584ABB00-SUB		A	
												SCALE:		NONE		WEIGHT:		SHEET:	
														5.41 LBS				1 OF 2	



 Mazzei®		MAZZEI INJECTOR CO., LLC 500 ROOSTER DRIVE BAKERSFIELD, CA 93307 PHONE: (661) 363-6500 FAX: (661)363-7500 WWW.MAZZEI.NET	
DESCRIPTION: INJECTOR; SSF01584ABB00			
SIZE: B	JOB NO.: N/A	DRAWING NUMBER: SSF01584ABB00-SUB	REV: A
SCALE: 1:2	WEIGHT: 5.41 LBS	SHEET: 2 OF 2	