

M21SV-1-1/2-C1CW (NC) / C2CW (NO) Motorized Ball Valve

1-1/2" NPT

110 to 240 VAC

Stainless Steel Body with FKM seals

2-Way

0 to 175 psi

2-Wire Actuator with capacitor powered return

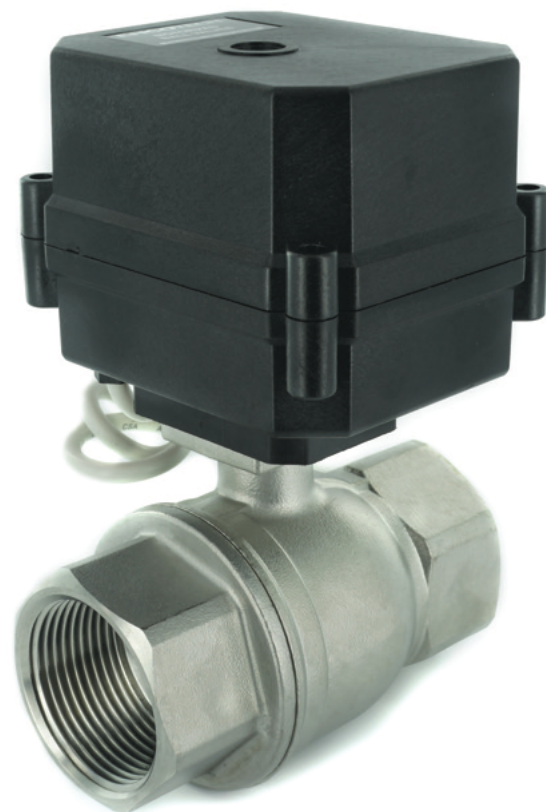
Ehcotech M21SV-1-1/2-C1CW / C2CW valves are general purpose 2-way, 2-position motorized ball valves with a 2-wire 110 to 240 VAC actuators. They are well suited for gravity feed applications as well as pressurized systems. The valve body is stainless steel with 1-1/2" NPT ports.

Valve Body

- 1-1/2" NPT Female Threads
- 0 to 175 PSI (0 to 12 BAR) pressure rating
- 265° F (130° C) max media temp
- Straight through, full port design
- Stainless Steel (SS304) valve body
- Stainless Steel (SS304) ball
- PTFE primary seals / FKM secondary seals

Valve Actuator

- 2-wire, 110 to 240 VAC 50/60Hz
- 12 Watt maximum power draw
- Standard cable length: 20"
- CE conformity
- IP 65 protection rating
- Valve position indicator window
- Limit switches stop current flow to motor at open/closed positions
- Cycle time: 8 seconds
- Stainless Steel gears



Available Versions

M21SV-1-1/2-C1CW = Normally Closed (NC) version

M21SV-1-1/2-C2CW = Normally Open (NO) version

Capacitor Return / Charge Time

The capacitors require 60 second charge time. This is accomplished by holding the valve in the energized position for a minimum of 60 seconds. With a fully charged capacitor, the valve will return to its default position (Closed position for C1CW and open position for C2CW) upon removal of external power.

Suitable Media

- Water
- Air
- Other inert gases
- Other low viscosity liquids compatible with valve materials

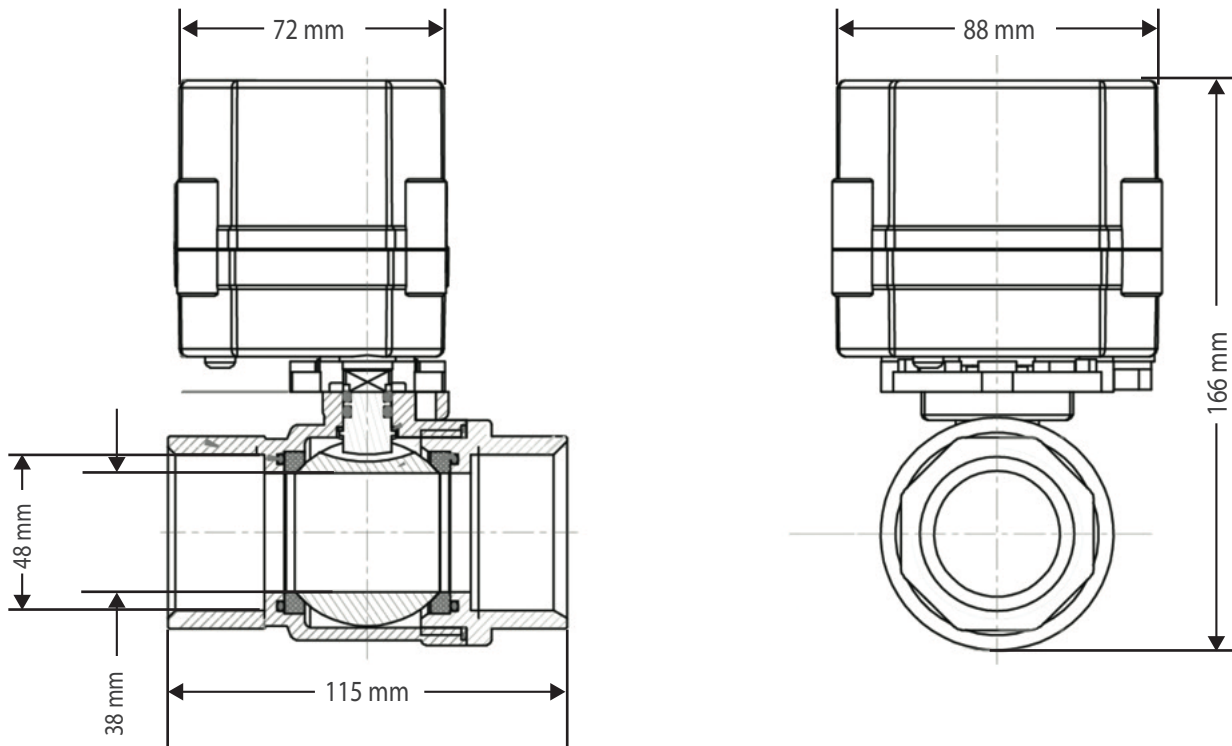
3555 Rosecrans St, STE 114-680
San Diego, CA 92110
tel: 1.619.300.2380
fax: 1.866.910.4799
Info@ehcotech.com

www.ehcotech.com

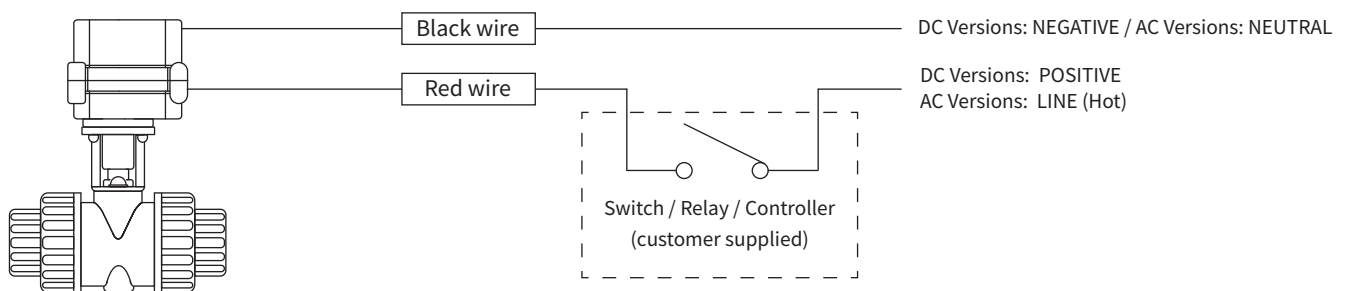
EHCOTECH
International Inc.

M21SV-1-1/2-C1CW (NC) / C2CW (NO) Motorized Ball Valve

DIMENSIONS



WIRING - 2-WIRE VERSIONS WITH CAPACITOR RETURN



NOTES:

1. Energize red wire to drive valve to powered position
2. Valve must be held in powered position for 60 seconds to fully charge capacitor to allow return cycle