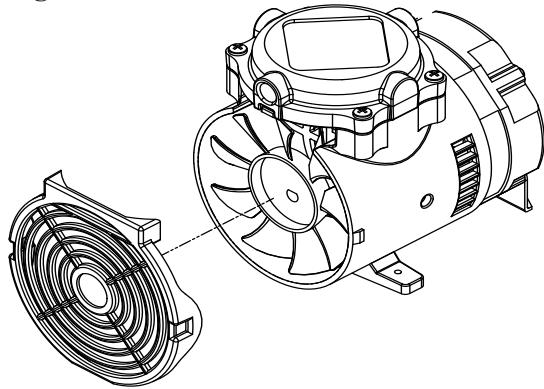


## REASSEMBLE FAN AND FRONT COVER

**STEP 15.** Assemble fan onto nib of the connecting rod assembly ensuring that the flat on the nib aligns with the flat of the fan hub. Press firmly until fan touches connecting rod bearing

**STEP 16.** Assemble front cover to housing by snapping slots on side of front cover onto tabs on side of the housing.

Figure 5

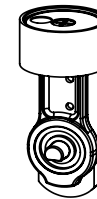


## COMPRESSOR SERVICE KIT PART NUMBER 10560

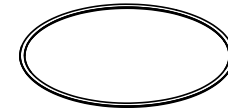
**⚠ WARNING:** Unplug the compressor before beginning disassembly.

**⚠ CAUTION:** Improper assembly or use of damaged parts may lead to premature failure. To avoid frequent repairs follow the recommended assembly procedures.

This kit includes the following parts:



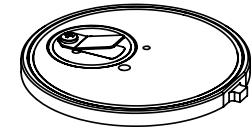
CONNECTING  
ROD/ECCENTRIC  
BEARING ASSEMBLY



HEAD O-RING



CYLINDER  
O-RING



VALVE PLATE  
ASSEMBLY

**NOTE:** Before you begin, read these instructions thoroughly and assemble the necessary tools. You will need:

- #2 Phillips bit for torque wrench (head screws, valve screws)
- 1/8" allen wrench bit for torque wrench (eccentric screw)
- Torque wrench (18-55 inch pounds)
- Clean cloths

## DISASSEMBLY

**STEP 1.** Clean external surfaces of compressor.

**STEP 2.** Loosen and remove the 4 head screws (1) and compressor head (2) (Figure 1).

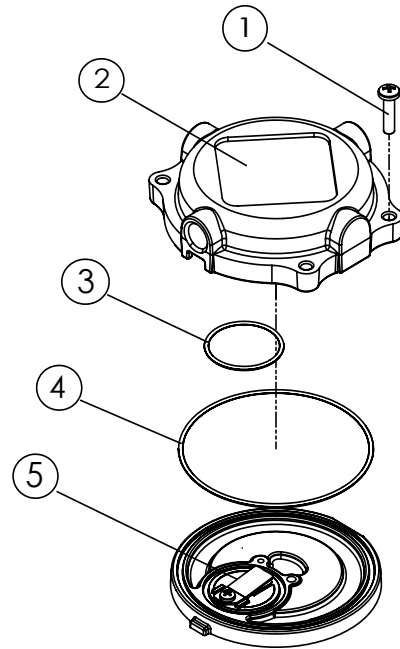
**STEP 3.** Carefully separate valve plate (5) from head.

**STEP 4.** Discard valve plate assembly and cylinder o-ring. Remove and discard orange colored head O-ring(4) and black colored exhaust cavity O-ring (3).

**STEP 5.** Remove front cover(A) (Figure 2). Remove fan (B) from eccentric bearing assembly (C).

**STEP 6.** Rotate eccentric bearing assembly to align set screw with eccentric set screw access hole. Loosen set screw with 1/8 allen wrench. Slide connecting rod assembly off shaft. Remove from housing and discard.

Figure 1



## REASSEMBLE ROD, VALVE PLATE ASSEMBLY AND HEAD

**STEP 7.** Insert new rod assembly through opening in the housing. **Align eccentric set screw with the flat of the shaft.** Push assembly onto shaft until eccentric contacts housing bearing.

**STEP 8.** Torque eccentric set screw to 55 inch pounds.

**STEP 9.** Confirm the new pre-installed cylinder O-ring is fully seated into groove on the bottom of the valve plate (Figure 3).

**STEP 10.** Confirm that cylinder is fully seated and centered on compressor housing shelf (figure 4)

**STEP 11.** With exhaust valve facing the front, place the valve plate assembly on the compressor housing so the lip of the cylinder fits into O-ring groove on valve plate assembly, ensure cylinder O-ring remains properly seated. (Figure 4)

**STEP 12.** Carefully install head O-ring and exhaust cavity O-ring, seated firmly into grooves.

**STEP 13.** Place head on top of valve plate aligning the tabs on the valve plate with the slots on the head and exhaust cavity towards the front.

**STEP 14.** Insert and tighten 4 head screws to 40 inch pounds in a criss crossed pattern.

Figure 3

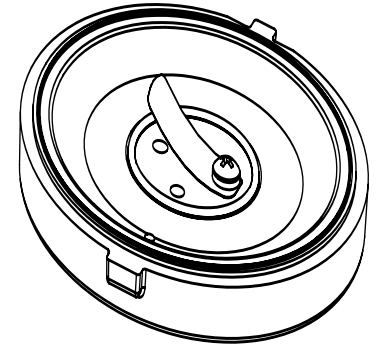
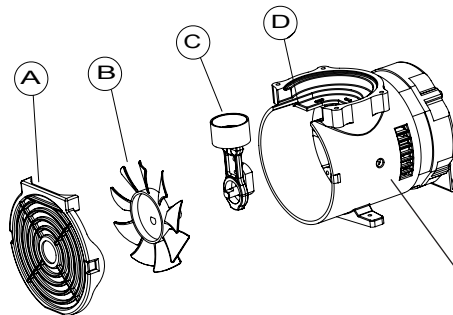


Figure 2



Insert allen wrench in access hole

Figure 4

